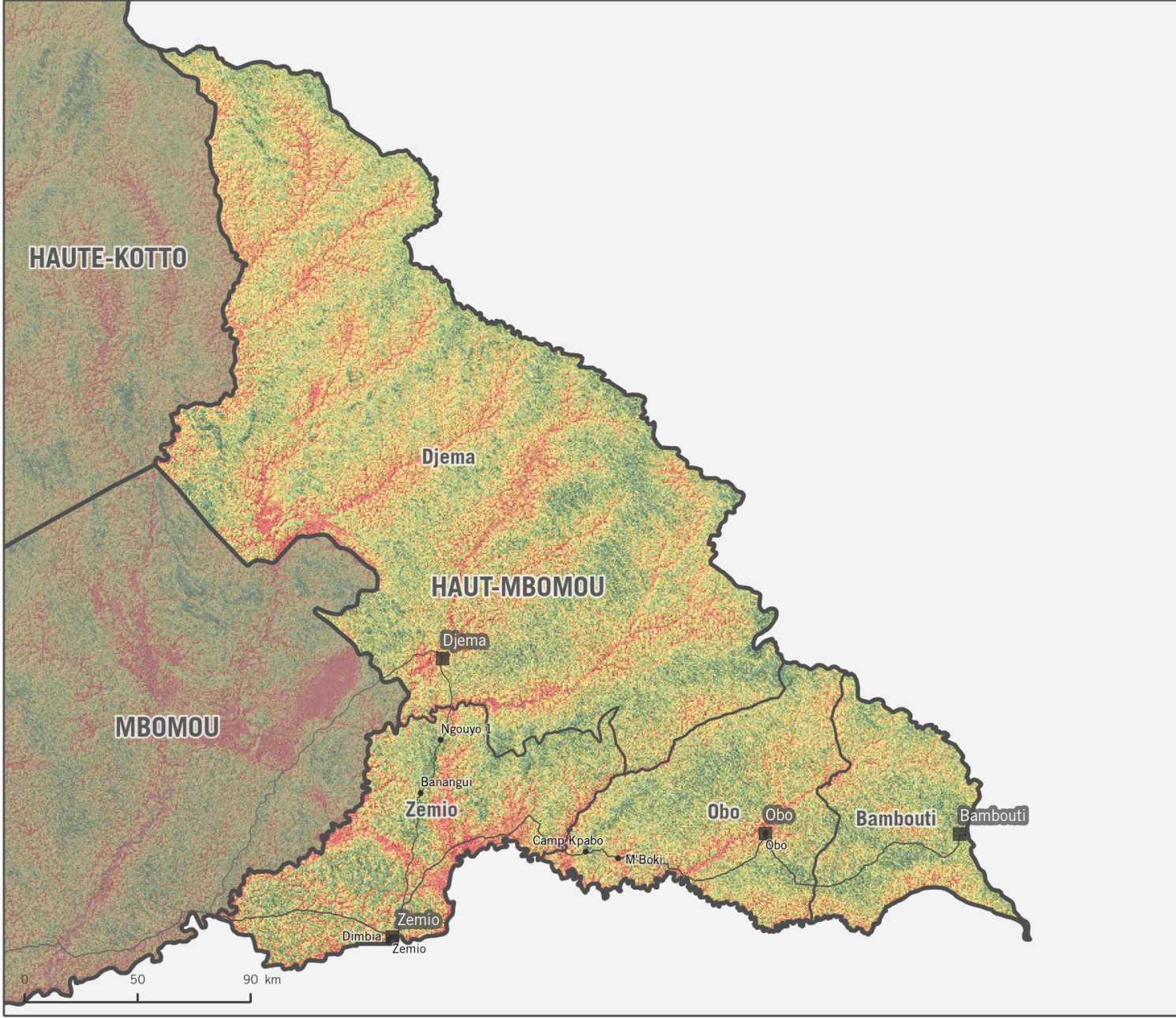


# CENTRAL AFRICAN REPUBLIC - Flood Susceptibility and Risk

## Haut-Mbomou Prefecture

Intended for humanitarian use  
Production date : June 2020



### Susceptibility

Susceptibility was calculated through weighted linear combination analysis of the following data: **soil drainage, landcover, slope, elevation, rain intensity, rain duration, topographic wetness index, height above nearest drainage, drainage density.**

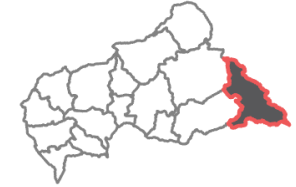
The map shows relative flood susceptibility across the surface of Central African Republic based on physical land features and rainfall patterns

### Risk

Risk was calculated using measurements of flood hazard (susceptibility), exposure, and vulnerability. **Hazard** is an average of the flood susceptibility score in populated areas. **Exposure** is measured as the proportion of people living in high/very high flood susceptibility areas. **Vulnerability** is a composite measure of housing structure fragility, food insecurity, low financial resilience, IDPs, youth, unaccompanied youth, elderly, and disabled persons.

Prefecture	Sub-Prefecture	Vulnerability Score	Susceptibility Hazard Score	People in High/Very High Flood Risk Area %	People in High/Very High Flood Risk Area #	FINAL RISK SCORE
Ombella M'Poko		1	4.20	74%	320,360	high
Lobaye		3	3.59	53%	161,627	low
Mambéré-Kadéï		2	2.87	27%	122,092	very low
Nana-Mambéré		2	2.06	9%	21,026	very low
Sangha-Mbaéré		3	3.65	59%	74,824	medium
Ouham Pendé		3	2.77	24%	116,132	low
Ouham		2	4.08	74%	334,110	medium
Kémo		3	4.13	70%	106,957	high
Nana-Gribizi		2	4.04	72%	101,176	medium
Ouaka		3	3.80	65%	240,230	medium
Bamingui-Bangoran		2	3.99	70%	41,846	medium
Haute-Kotto		2	4.19	81%	91,422	high
Vakaga		2	4.39	91%	59,101	high
Basse-Kotto		3	3.73	63%	198,780	medium
Mbomou		1	4.12	79%	163,962	medium
Haut-Mbomou		4	3.43	57%	47,450	low
	Bambouti		1.78	0%	0	low*
	Djéma		3.11	32%	5,876	low*
	Obo	2	3.55	65%	28,587	medium
	Zémio	3	3.37	49%	9,500	medium
Bangui		2	4.80	98%	858,552	high

\* Risk Score is missing vulnerability parameter



### Flood Susceptibility

- Very Low
- Low
- Medium
- High
- Very High
- Capitals
- Settlements (>1,000)
- Primary Roads
- Secondary Roads
- Surface Water

Data sources:  
Administrative Boundaries- UNOCHA  
Surface Water- ESA Climate Change Initiative, 20m Africa Land Cover 2016  
Flood Susceptibility- REACH Initiatives CAR  
Coordinate System: GCS WGS 1984

File:  
REACH\_CAR\_Map\_FloodRisk\_Haut-Mbomou\_11JUN2020\_A4  
Contact:  
reach.mapping@impact-initiatives.org

Note: Data, designations and boundaries contained on this map are not warranted to be error-free and do not imply acceptance by the REACH partners, associates, donors mentioned on this map.

See methodology at the CAR REACH Resource Centre [link](#)

Funded by:

